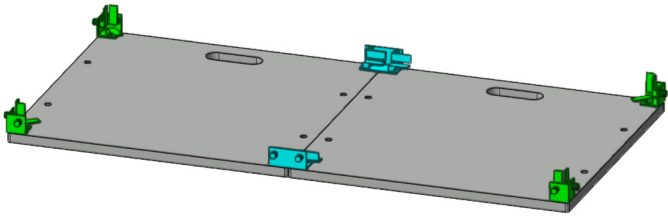


2 Panel Wide DJ Table

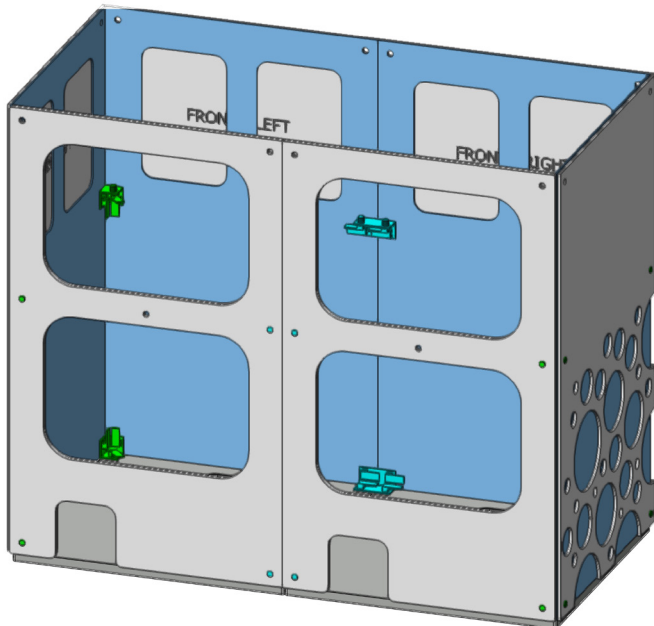
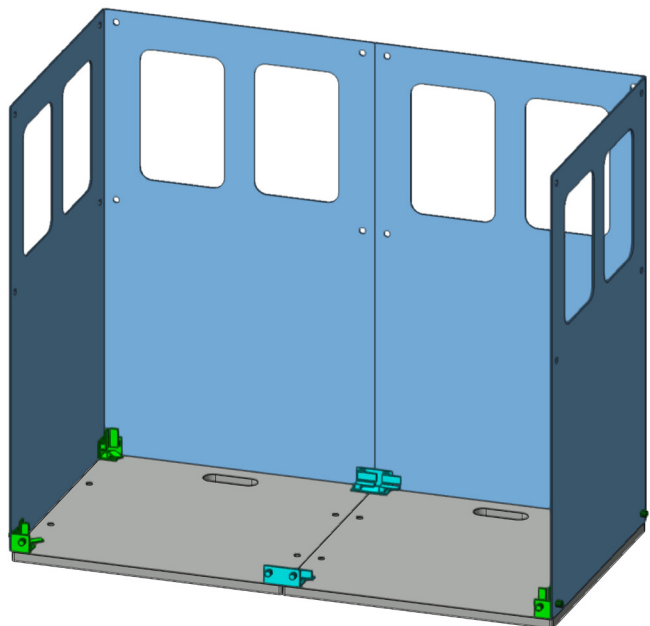


STEP ONE

- Align superbases with handles facing away from you.
- Connect the bases using C4 connectors.
- Attach C3 connectors to the outside corners.

STEP TWO

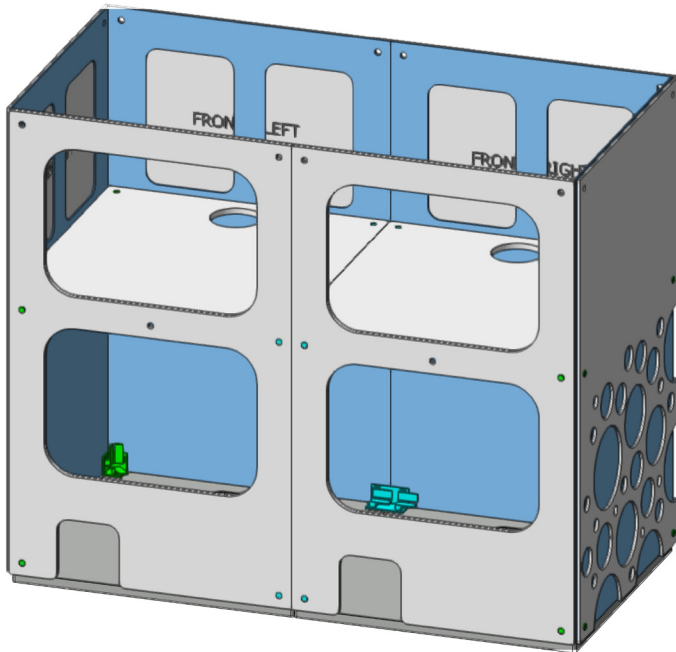
- Attach Frosty Cutout Panels to the sides and Front of DJ Table as shown.



STEP THREE

- The levers into the frosty cutout panels will need to be disengaged to add the next panels.
- Add the decorative panels to the front and sides of the frosty panels.
- Add the rear access panels.
- Attach C4 connectors on the backside of the center panels and rear access panels to hold the shelf.
- Attach C3 connectors to the four corners to hold the shelf.

Questions about ATOMIC products?
Contact your Modular Systems Account Manager!
www.atomicdesign.tv/contact



STEP FOUR

- Add the shelf panels with the cord holes towards the front of the unit, by dropping them into the unit from the top.
- Engage the levers to lock in the shelves.

NOTE:

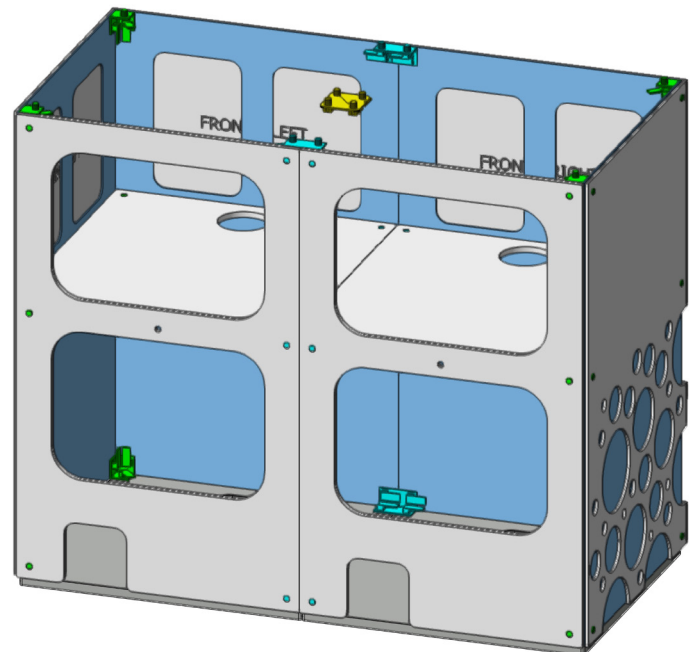
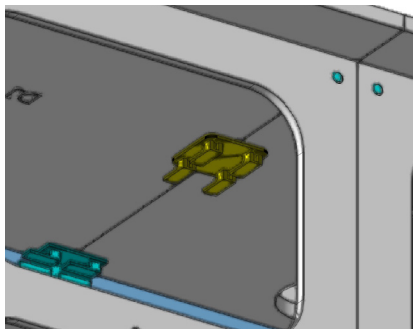
- The center holes in the rear panels will not be used with a connector.

STEP FIVE

- Add the rear access panels.
- Attach the C3 connectors to each corner.
- Attach the C4 connectors in the middle, both front and back.

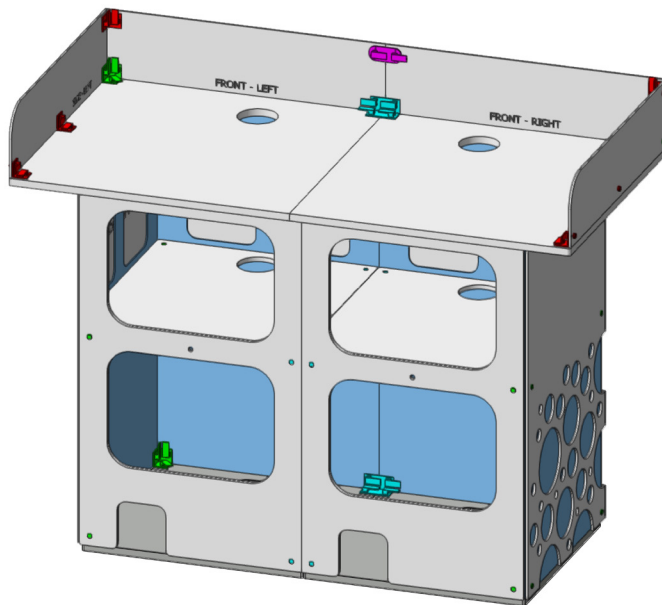
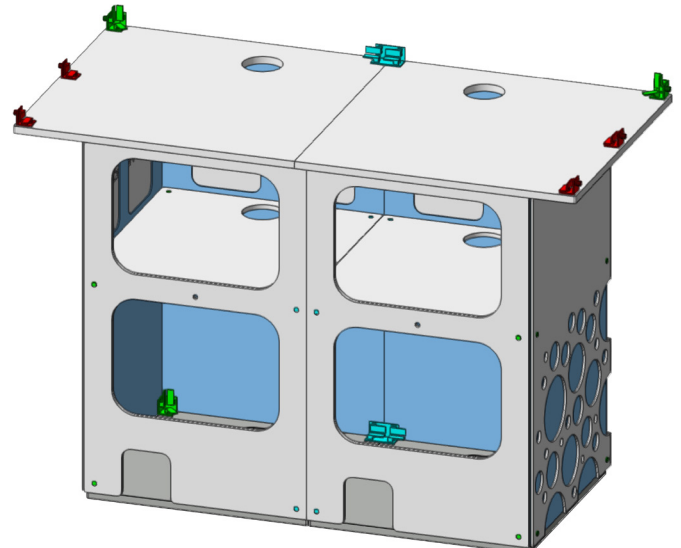
NOTE:

- The F4 connector will attach to the underside of the top panels in STEP SIX per the below image.



STEP SIX

- Add the table top panels.
- Connect the F4 from STEP FIVE.
- Attach the C3 connectors to the front corners.
- Attach C2 connectors to the middle of the sides and rear corners.
- Attach a C4 connector to the front center.



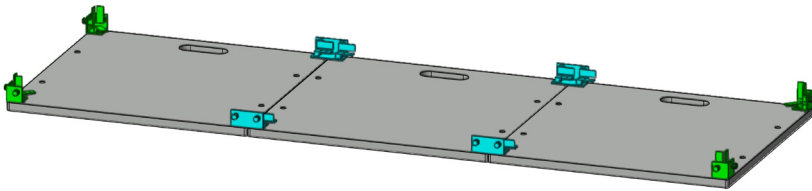
STEP SEVEN

- Add the skirt panels with the engraved side on the inside.
- Connect the F2 connector to the middle.
- Attach C2 connectors to the front two top corners.

3 Panel Wide DJ Table

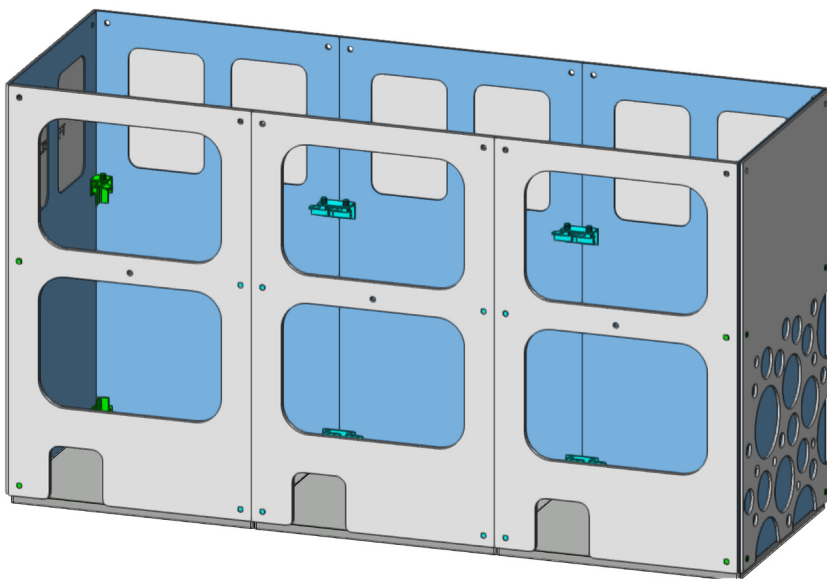
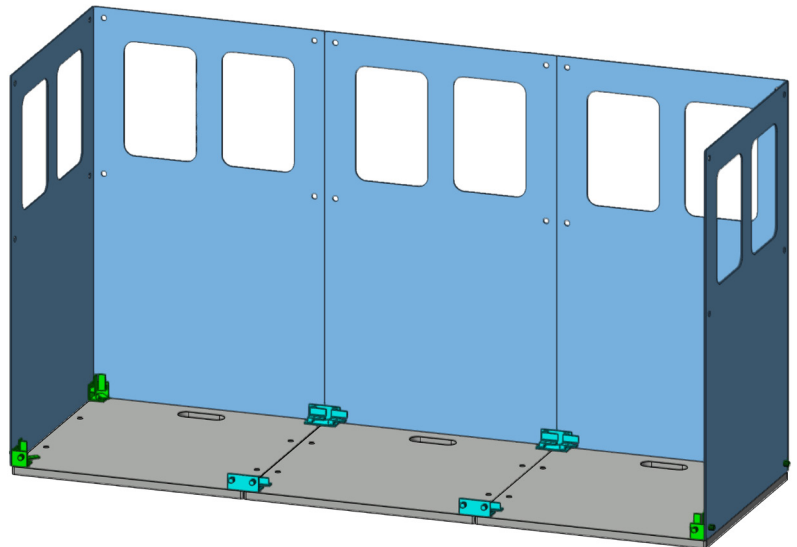
STEP ONE

- Align superbases with handles facing away from you.
- Connect the bases using C4 connectors.
- Attach C3 connectors to the outside corners.



STEP TWO

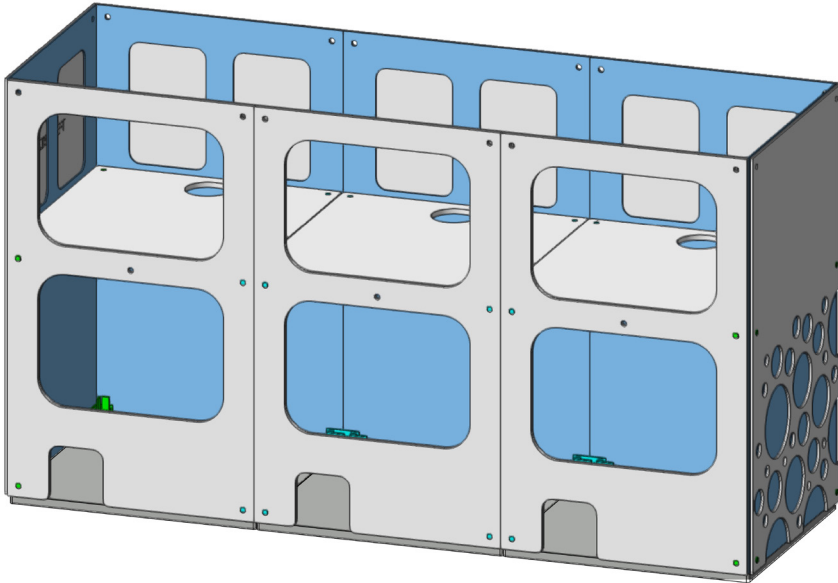
- Attach Frosty Cutout Panels to the sides and Front of DJ Table as shown.



STEP THREE

- The levers into the frosty cutout panels will need to be disengaged to add the next panels.
- Add the decorative panels to the front and sides of the frosty panels.
- Add the rear access panels.
- Attach C4 connectors on the backside of the center panels and rear access panels to hold the shelf.
- Attach C3 connectors to the four corners to hold the shelf.

Questions about ATOMIC products?
Contact your Modular Systems Account Manager!
www.atomicdesign.tv/contact



STEP FOUR

- Add the shelf panels with the cord holes towards the front of the unit, by dropping them into the unit from the top.
- Engage the levers to lock in the shelves.

NOTE:

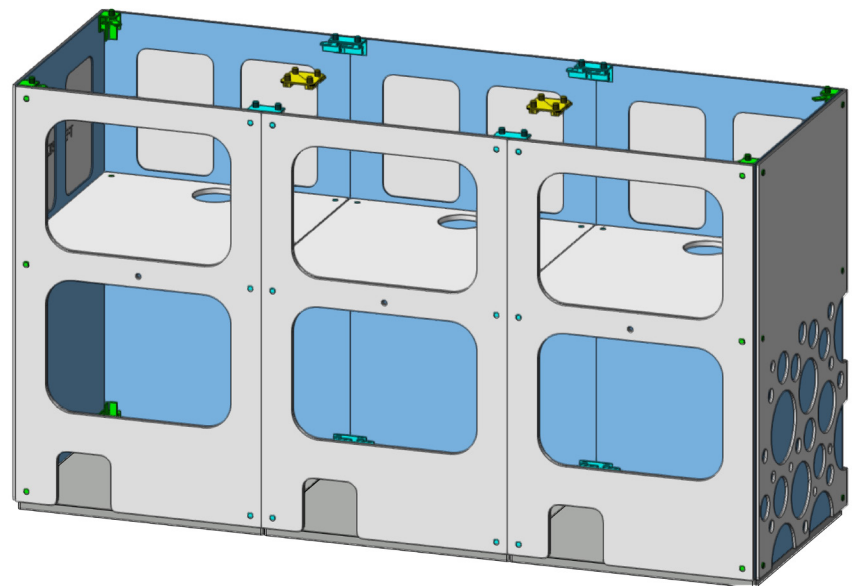
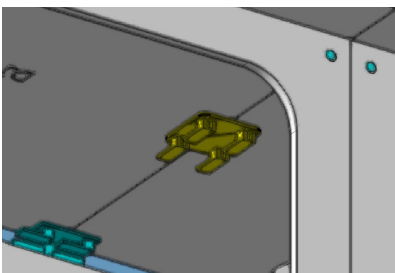
- The center holes in the rear panels will not be used with a connector.

STEP FIVE

- Add the rear access panels.
- Attach the C3 connectors to each corner.
- Attach the C4 connectors in the middle, both front and back.

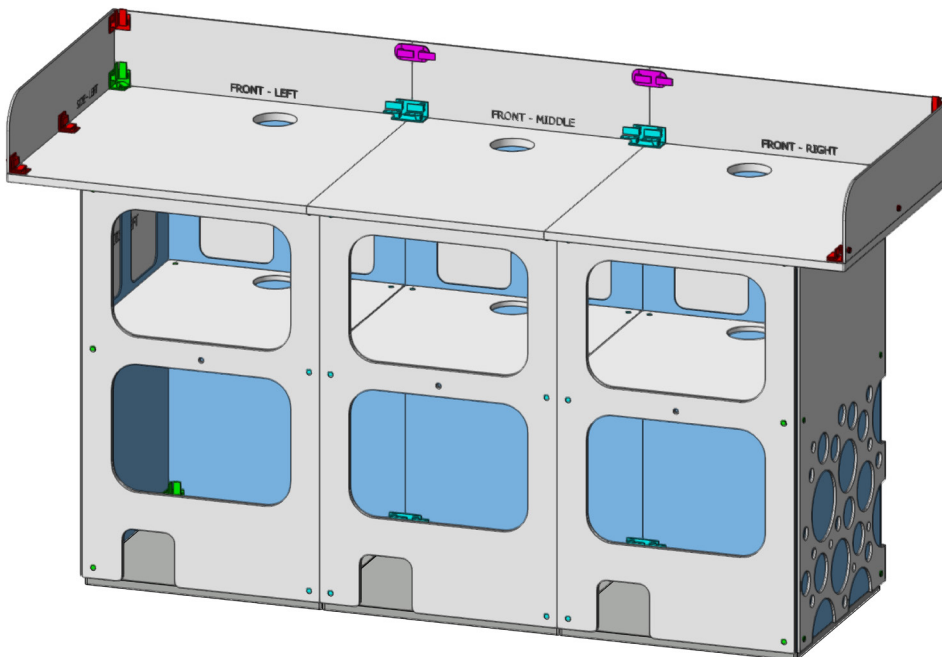
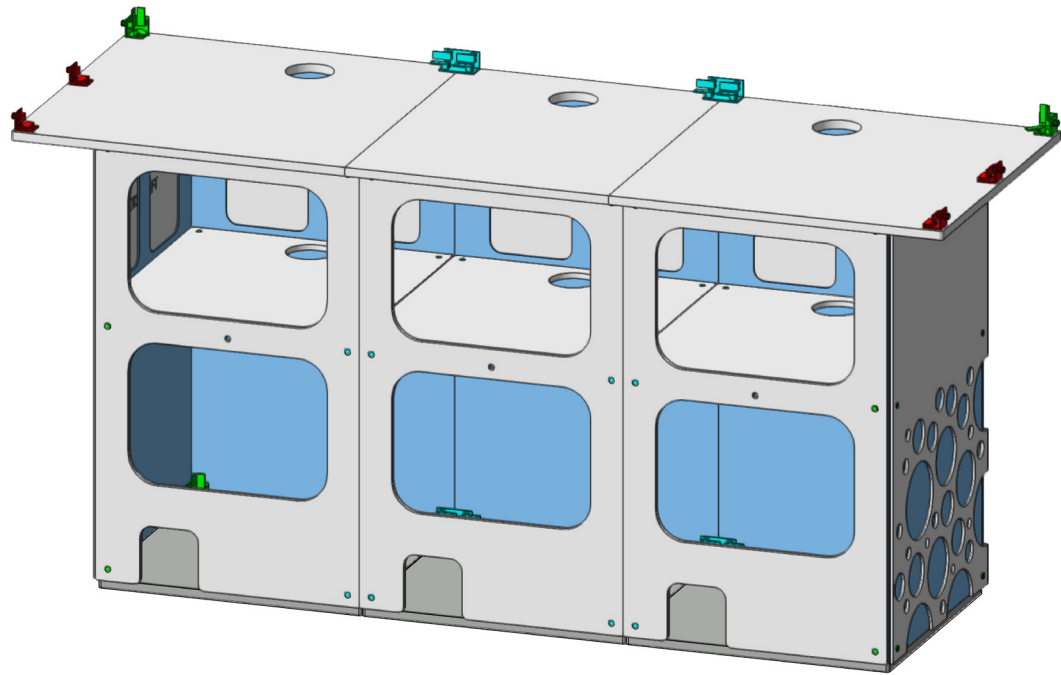
NOTE:

- The F4 connectors will attach to the underside of the top panels in STEP SIX per the below image.



STEP SIX

- Add the table top panels.
- Connect the F4's from STEP FIVE.
- Attach the C3 connectors to the front corners.
- Attach C2 connectors to the middle of the sides and rear corners.
- Attach C4 connectors to the front center.



STEP SEVEN

- Add the skirt panels with the engraved side on the inside.
- Connect the F2 connectors to the middle.
- Attach C2 connectors to the front two top corners.